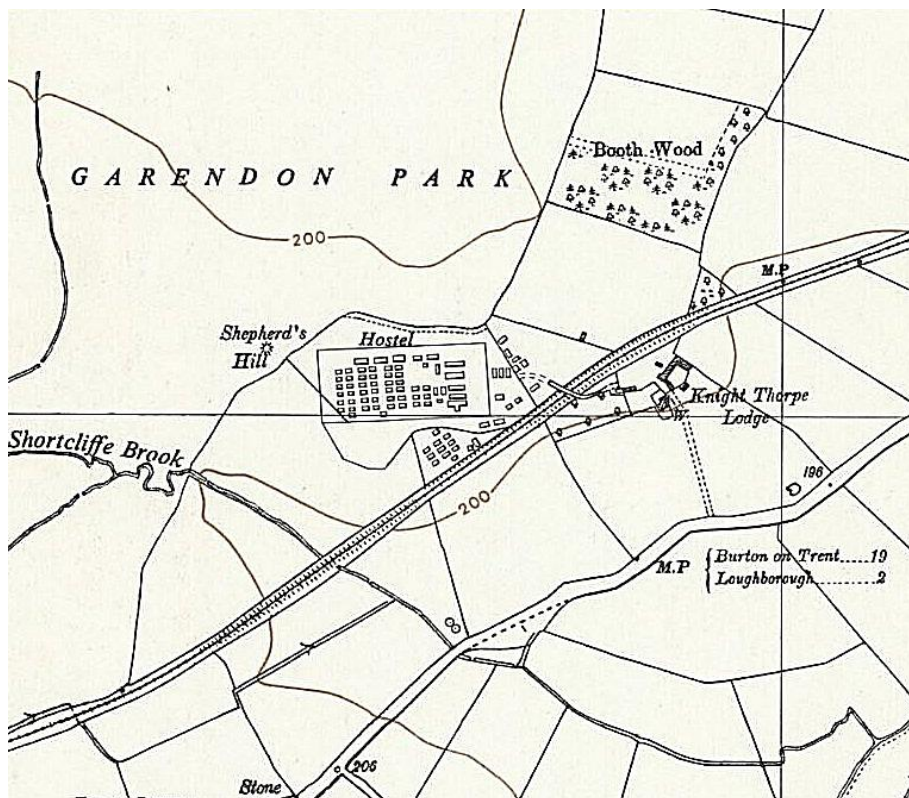


**Camp 28 - Garendon Park, Loughborough, Leicestershire (aka  
Knighthorpe / Knight Thorpe)**

Included in the 1945 ICRC camp list – Labour Camp. 28. Knighthorpe Camp, Ashby Road, Loughborough, Leics.

<b>1947 Camp List</b>							
28(G. W.C.)	Knighthorpe Camp, Ashby Road, Loughbo rough, Leicester shire.	N	Priswar,Loug hborough	Loughbo rough 2392	Loughbo rough (LMS)	Lt.Col.E.A.W almisley	v/14 53/2

<b>Prisoner of War Camps (1939 – 1948) - Project report by Roger J.C. Thomas - English Heritage 2003</b>							
OS NGR	Sh ee t	No.	Name & Location	County	Co nd' n	Type 1945	Comments
SK 50 19	1	28	Garendon Park, Loughborough	Leices	4		
SK 452 320	2 9		Knighthorpe Camp (Knight Thorpe), Loughborough	tershir e	5	German Working Camp	



OS map 1955

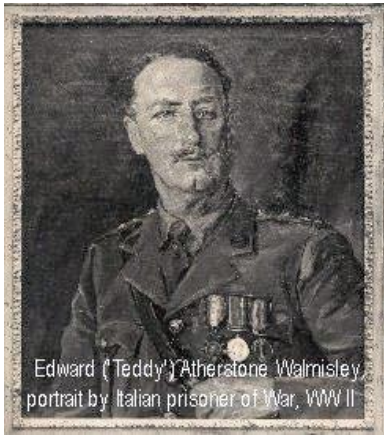
Note – English Heritage have listed 2 camps – but, as the location details are inaccurate, I have considered it to be one.

**Location:** The first NGR is a general location. The second NGR is for a location in Derbyshire, not Leicestershire, and is 16 km away from Loughborough.

The map shows a grid reference of SK 505 191 for the site of the pow camp which was still marked, and was used as a 'hostel' in 1955. It was alongside Garendon Park, and the Lodge nearby was 'Knight Thorpe' - the road was the Ashby Road (now called the Old Ashby Road).

Garendon Park is W of Loughborough, the Hall was in the N part of the park, it was not part of the pow camp.

**Before the camp:** Part of large Garendon Park and estate.



Edward ('Teddy') Atherstone Walmisley  
portrait by Italian prisoner of War, WW II

**POW Camp:** The camp was accessed by crossing the footbridge over the Charnwood Forest Railway. The camp was established during 1941 to house Italian prisoners of war to

work on farms in the counties of Leicester, Derbyshire, Nottinghamshire and Rutland.

It was listed as Italian working camp / labour battalion to at least 1945 (map 1 main text) – the English Heritage report then records it as a German Working Camp. Picture is of Camp Commandant – Lieutenant Colonel Edward Atherstone Walmisley. The Queen's Regiment, then transferred to the Pioneer Corps